



**PYBAR**  
MINING SERVICES

Dargues Gold Mine

Community Information Session

---

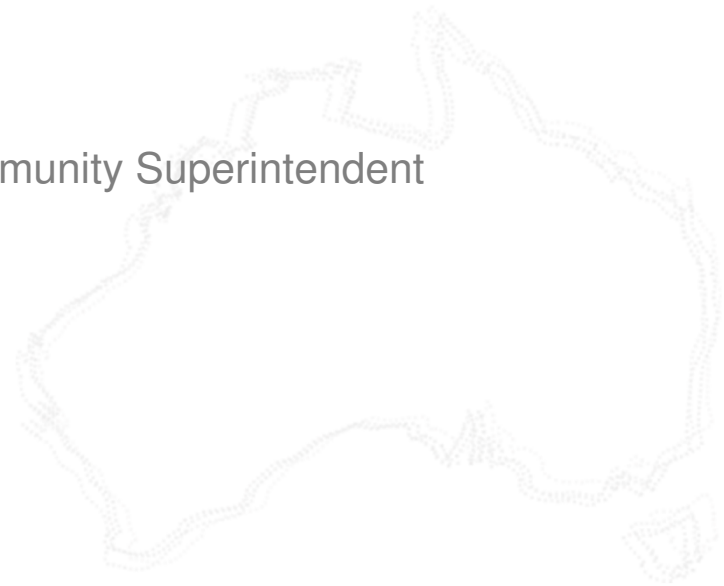
# Community Information Session - Overview

- Project Team Introduction
- Dargues Gold Mine – Project Overview
- Project Achievements
- Project Status
- Processing Plant construction
- Look ahead – next 12 months
- Break out session for questions



# Project Team

- Shannon Green – General Manager
- Mick South – Mining Manager
- Len Sharp – Health, Safety, Environment & Community Superintendent
- Johan Welmans – Processing Manager
- Greg Matthews – Construction Manager
- Tim Slade – DRA Project Manager



# Dargues Gold Mine – Project Overview

- Will be employing 100-120 people locally and utilising local suppliers where possible.
- Current 5 year mine life, with opportunities for extension.
- Conventional underground mine with ore trucked to surface for processing.
- Production of a gold sulphide concentrate for further processing offsite.
- Finance secured to support Project construction and commencement of production.
- PYBAR Mining Services to provide whole of mines services.
- DRA to provide construction services for Processing Plant.



# Project Achievements

- Currently employing 33 people, 26 are local to the area



**SAFETY**  
**SERVICE**  
**RESPECT**  
**RESULTS**

**DARGUES**  
GOLD MINE

**PYBAR**  
MINING SERVICES

## Project Achievements – Some Local Suppliers

- Backhouse Transport
- Bradley Surveying
- Braidwood Auto Electrical
- Braidwood Bakery
- Braidwood Colonial Motel
- Braidwood Fabrication
- Braidwood Medical Centre
- Braidwood Outdoors
- Braidwood Preschool
- Braidwood Rural
- Dirtcon
- Hockeys Braidwood
- IGA
- JG Earthworks
- Landmark Daniel Walker
- Landmark Real Estate
- Palerang Constructions
- Ray White
- S.Beavage Mechanical Repairs
- Steve Waters Fencing
- The Royal Mail Hotel
- Wallace Street Surgery

# Project Achievements

- Sponsorship of Braidwood Cup, Rodeo and Rugby club





# Project Achievements

- Induction of local emergency services and hosting of Rural Fire Service Navex exercise



**SAFETY**  
**SERVICE**  
**RESPECT**  
**RESULTS**

**DARGUES**  
GOLD MINE

**PYBAR**  
MINING SERVICES

# Project Achievements

- Relocation of aboriginal artefacts from work areas



**SAFETY**  
**SERVICE**  
**RESPECT**  
**RESULTS**



**DARGUES**  
GOLD MINE

**PYBAR**  
MINING SERVICES



# Project Achievements

- Weed eradication



**SAFETY**  
**SERVICE**  
**RESPECT**  
**RESULTS**

**DARGUES**  
GOLD MINE

**PYBAR**  
MINING SERVICES

# Project Achievements

- Noise reduction - trucks and surface ventilation fan



**SAFETY**  
**SERVICE**  
**RESPECT**  
**RESULTS**

**DARGUES**  
GOLD MINE

**PYBAR**  
MINING SERVICES



# Project Achievements

- Vegetation stress monitoring



# Project Achievements

- Blast & noise monitoring



**SAFETY**  
**SERVICE**  
**RESPECT**  
**RESULTS**

**DARGUES**  
GOLD MINE

**PYBAR**  
MINING SERVICES



# Project Achievements

- Community open day April 2018



**SAFETY**  
**SERVICE**  
**RESPECT**  
**RESULTS**

**DARGUES**  
GOLD MINE

**PYBAR**  
MINING SERVICES

# Project Achievements

- No reportable environmental incidents



**SAFETY**  
**SERVICE**  
**RESPECT**  
**RESULTS**

Section 55 Protection of the Environment Operations Act 1997

**Environment Protection Licence**

Licence - 20095

**Licence Details**

Number:	20095
Anniversary Date:	01-July

**Licensee**

BIG ISLAND MINING LIMITED
LEVEL 10, 56 PITT STREET
SYDNEY NSW 2000

**Premises**

DARGUES GOLD MINE
MAJORS CREEK ROAD
MAJORS CREEK NSW 2622

**Scheduled Activity**

Crushing, grinding or separating
Mining for minerals

**Fee Based Activity**

Activity	Scale
Crushing, grinding or separating	0-30000 T annual processing capacity
Mining for minerals	0-30000 T annual production capacity

**Region**

South East - Queanbeyan
11 Farrer Place
QUEANBEYAN NSW 2620
Phone: (02) 6229 7002
Fax: (02) 6229 7006
PO Box 622
QUEANBEYAN NSW 2620

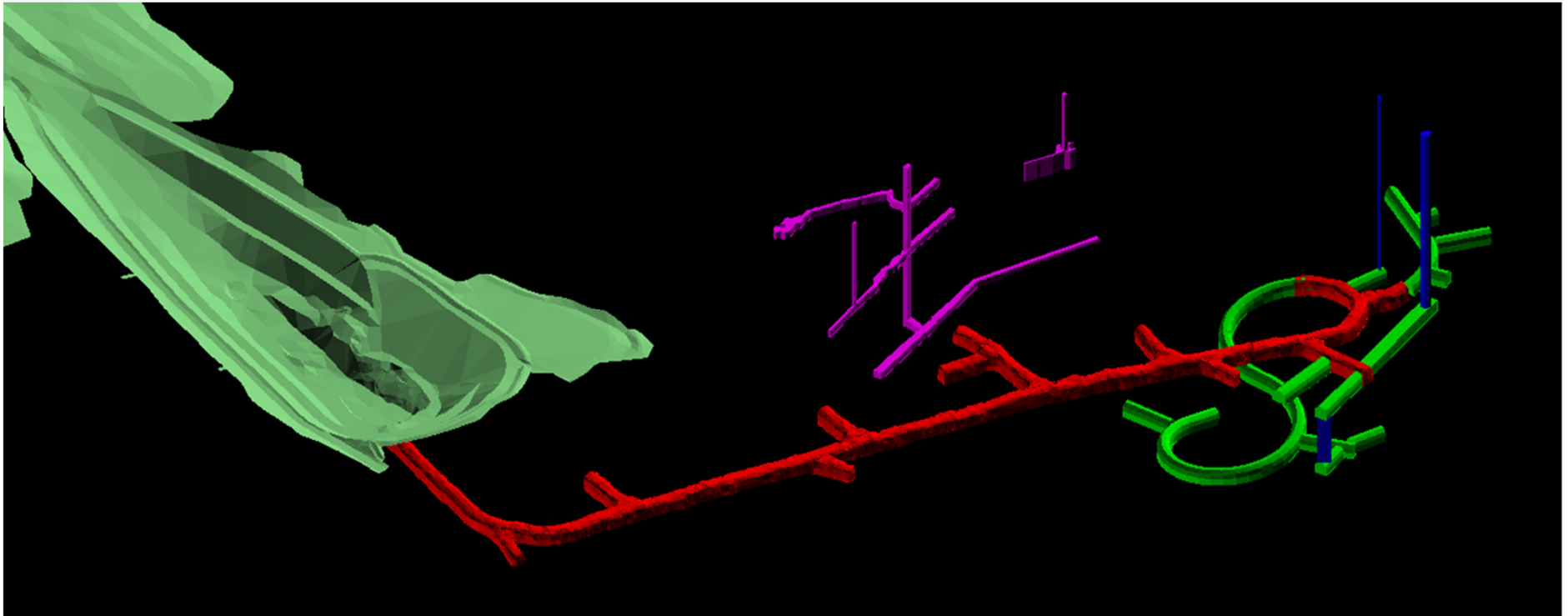
Environment Protection Authority - NSW  
Licence version date: 18-Nov-2018

Page 1 of 26

**DARGUES**  
GOLD MINE

**PYBAR**  
MINING SERVICES

# Project Status



SAFETY  
SERVICE  
RESPECT  
RESULTS

  
DARGUES  
GOLD MINE

  
PYBAR  
MINING SERVICES



# Project Status



**SAFETY**  
**SERVICE**  
**RESPECT**  
**RESULTS**

  
**DARGUES**  
GOLD MINE

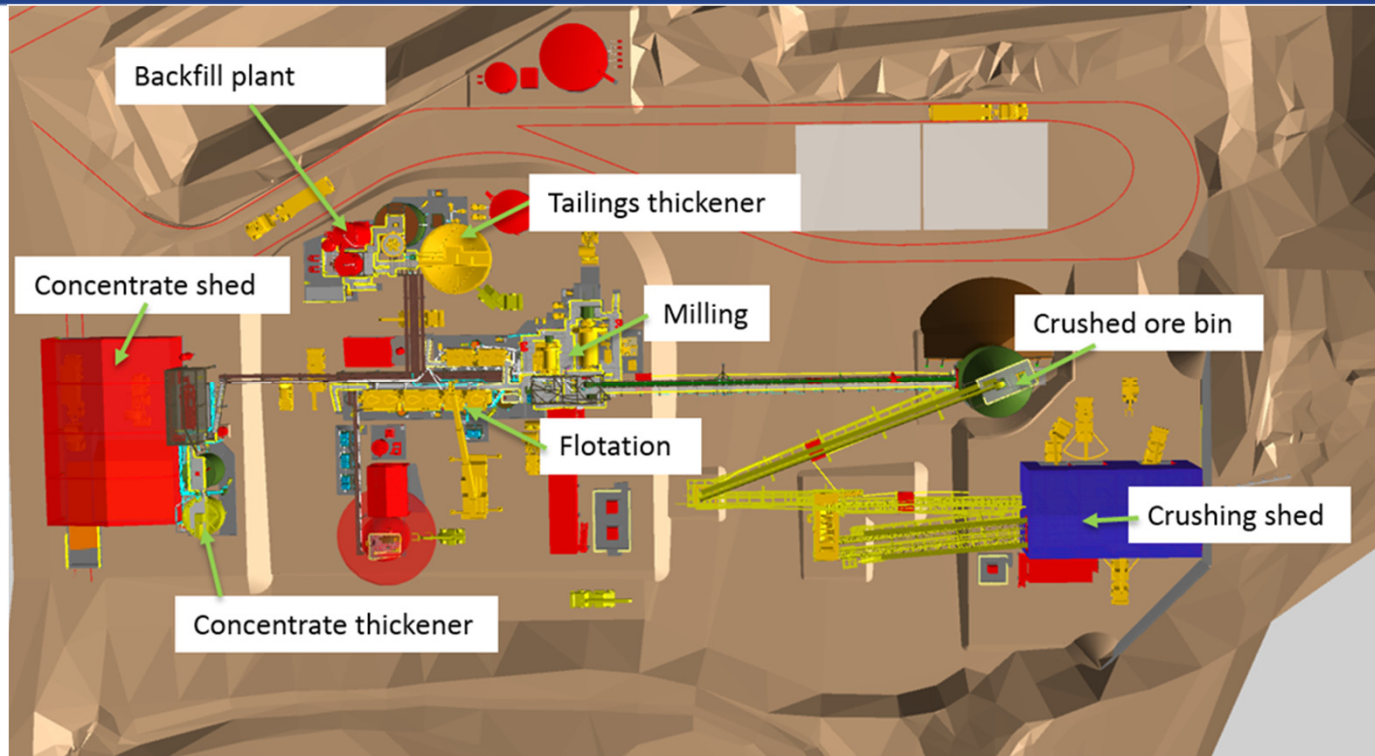
**PYBAR**  
MINING SERVICES

# Processing Plant Construction

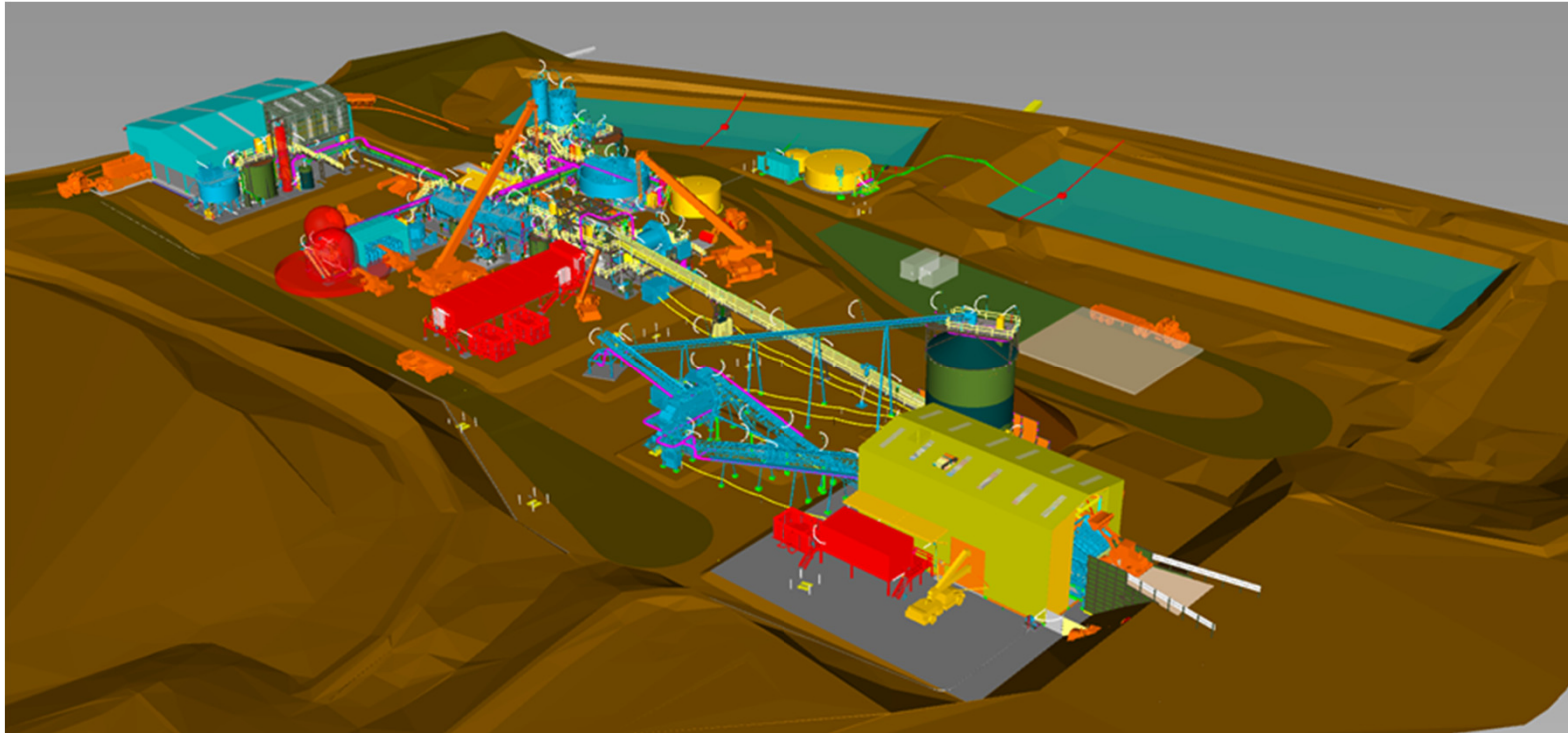
- Key dates – Construction will commence in February, scheduled to be completed by December with commissioning completed in March 2020
- Peak activity period – Scheduled for September 2019
- Manning numbers – 20 to commence in February with manning up to 75 during peak activity period
- Mill construction methodology – where possible the structural steel components will be pre-assembled on the ground and lifted in modules
- Accommodation – The construction workforce will be housed locally or in nearby towns and the majority of personnel will be bussed to Site.



# Processing Plant



# Processing Plant

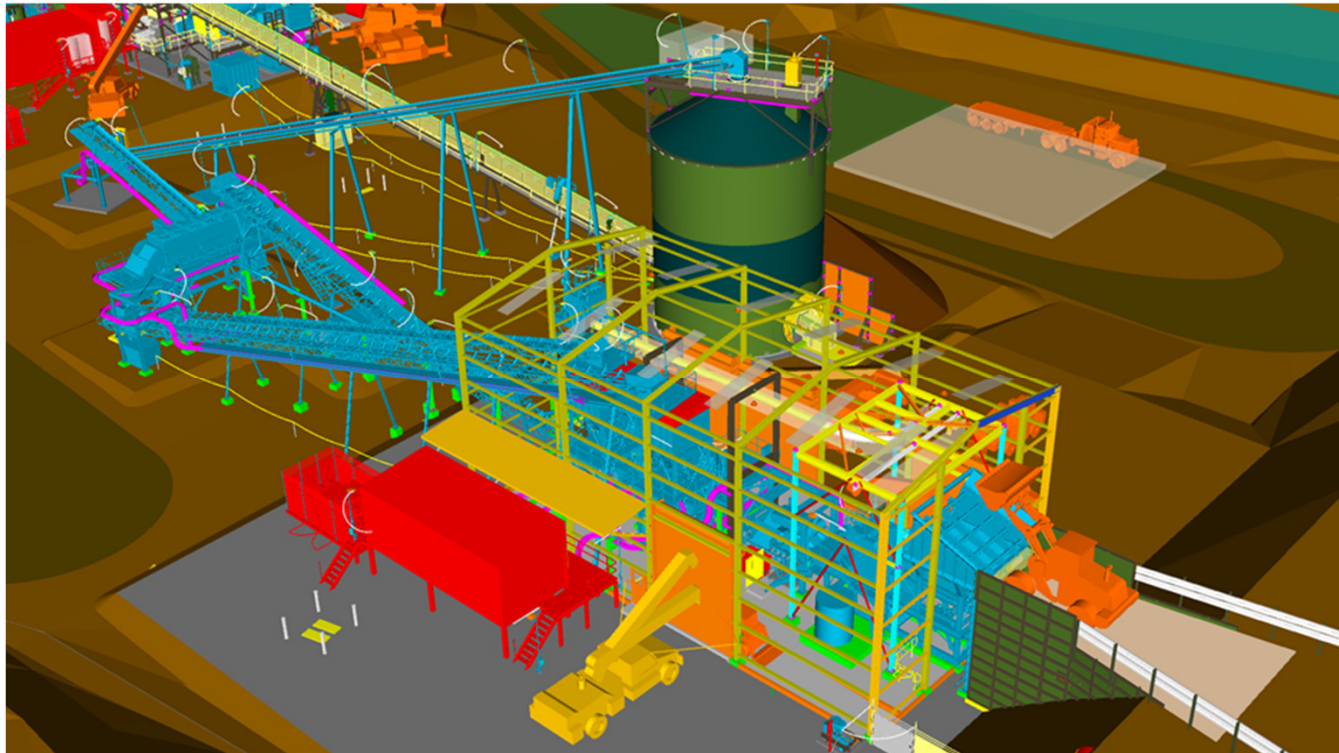


**SAFETY**  
**SERVICE**  
**RESPECT**  
**RESULTS**

**DARGUES**  
GOLD MINE

**PYBAR**  
MINING SERVICES

# Processing Plant



**SAFETY**  
**SERVICE**  
**RESPECT**  
**RESULTS**

**DARGUES**  
GOLD MINE

**PYBAR**  
MINING SERVICES

# Processing Plant



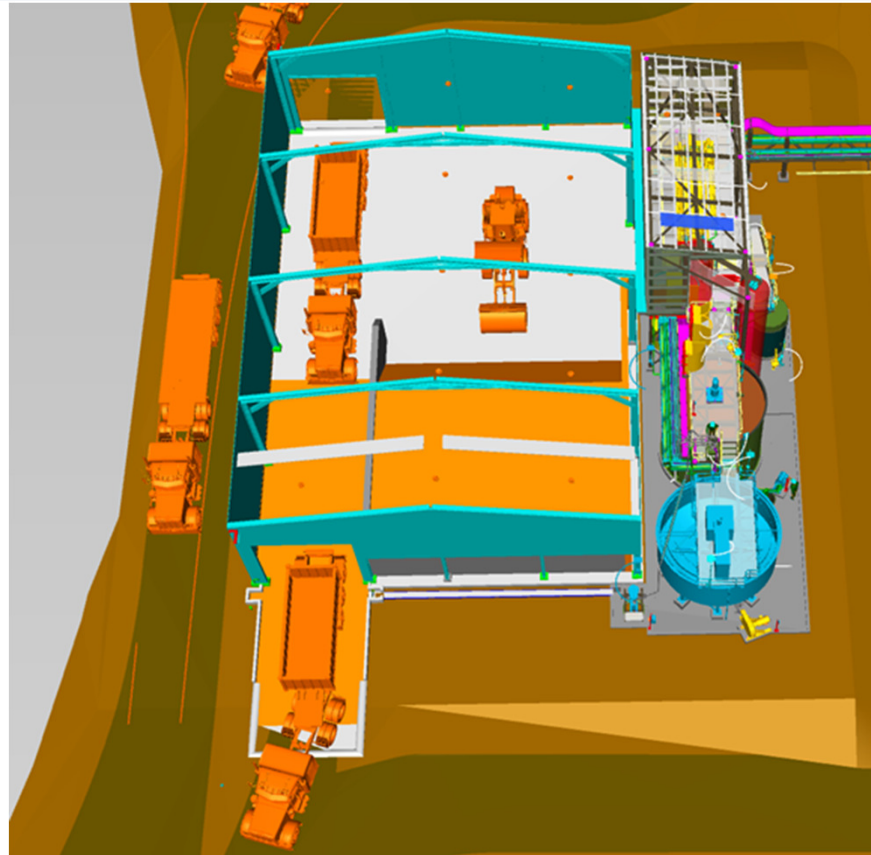
**SAFETY**  
**SERVICE**  
**RESPECT**  
**RESULTS**

**DARGUES**  
GOLD MINE

**PYBAR**  
MINING SERVICES



# Processing Plant



**SAFETY**  
**SERVICE**  
**RESPECT**  
**RESULTS**

**DARGUES**  
GOLD MINE

**PYBAR**  
MINING SERVICES

## Look ahead - next 12 months

- Increased opportunities for local employment
- Further community engagement and associated initiatives
- Completion of Escapeway and Return Air Rise shafts
- Relocation of surface ventilation fan underground
- Processing Plant construction
- Waste rock emplacement facility construction
- Spring Creek Crossing construction
- Tailings storage facility construction
- Continued environmental monitoring



# Break out Session

- Close of formal information session
- Questions for Project Team







Meeting close

